

Dailey Supply, Inc.

Hand Injury Avoidance &

Load Control Tools

Call us Today!

814.833.7227

Geoff Novy

gnovy@daileysupply.com

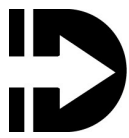
Mike Winschel

mike@daileysupply.com



Dailey Supply, Inc.
1524 French Street
Erie, PA 16501

814.833.7227
814.838.3285 Fax
www.DaileySupply.com



INTRODUCING

TagAttach

The Retractable Safety Tagline
“Get a strong grip on safety”



The TagAttach retractable safety tagline is ideal for lifting applications where tagline contact is maintained throughout the lift. Housed within a durable polymer casing, the innovative TagAttach is impact resistant, offers automatic recoil and brake, and stainless steel and aluminum components ensure longevity and reliability. With TagAttach TagHook technology, hook up is an easy “Snap On/Snap Off” process. The anti-burn, anti-slip TagAttach is retractable preventing tangles or knots while offering one-hand, “on the fly” adjustment. Any excess line length does not accumulate at operator’s feet during the lift – greatly reducing risk of a potential slip, trip or fall hazard.

FEATURES

- User Friendly
- Total Lift Control
- Anti-Knot; Anti Fray
- Tangle resistant
- Easy Storage
- One hand, “on the fly” adjustment

The “G-Rope”

- Water Resistant and Buoyant
- Anti-Slip, Anti-Tangle Rope
- Reflective cover (ideal for night work)
- TagAttach TagHook technology
- Snap-on; Snap-off



The TagAttach Grip Rope Safety Tagline

The “G-Rope” safety tagline features a high-density, anti-tangle core with TagAttach TagHook technology for easy “snap on/snap off” hook up process. The G-Rope is ideal where the rigger is required to release the tagline due to planned lift height and load travel.



Tagline Tool

The Tagline is a tool to which a load-guiding lanyard is attached to assist in controlling the swing of a load during transport and to aid in aligning the load before it is brought to rest.

Close Proximity Load Guidance

MagSwitch Technology offers several lightweight ergonomically designed magnets – perfect for helping guide and place a load when space precludes the use of a tagline



Handlifter 60-M



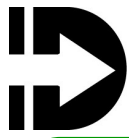
Handlifter 235 & 400 Fixed



Handlifter 60 CE

Push button On/Off Control
100% duty cycle-Magnet can stay ON forever!
Magswitch magnet stays clean when off!
Indicators: “On” indicator light; Battery strength indicator
Cordless Electric rechargeable 4 volt battery with Charger (includes 2 batteries)
Recharges in just 20 minutes.
Super strong Magnet Up to 200 lb. (90 kg) of grip More than 3 times the recommended safe working load of 60 lb. (27 kg)
Pipe groove for transporting pipe.
High Duty Cycle Magnet for years of daily use

The TagAttach Retractable Safety Tagline and the TagAttach “G-Rope” Safety Tagline products are not designed for or intended for use as a lifting device.



Stay safe. This extremely powerful On/Off Permanent Rare Earth magnet lets you guide loads into position without being in close proximity. Attach On/Off permanent magnet to a corner or along the side of your load.

As the load is lifted, the Load Control Magnet's articulating connection to the lightweight telescoping pole allows you to control and position the load exactly where you want without endangering yourself, others or expensive equipment, should your lifting device fail.

Features

- Powerful On/Off Rare Earth Magnet
- Works on Flat and Pipe
- Pole telescopes from 6' to 12'



Dailey Supply, Inc.
814.833.7227 / Fax 814.838.3285
www.DaileySupply.com

THE ANSWER TO YOUR “HANDS-OFF” POLICY

It's Simple...

"Stiffy Safe Hand Tools - we protect fingers, hands & arms, by avoiding pinch points & crush points"

Purpose

To manufacture a line of safety products that provide rig operators a meaningful way to create safer working conditions and implement evolving risk management safety protocols.

When used effectively & as designed, our products provide a buffer zone of safety where rig personnel can guide, maneuver, spot and land suspended loads & work drill pipe on the platform.

Operators now have a way to mitigate risk by equipping & training workers to not place themselves in danger working in an unsafe proximity to, or under hazardous suspended loads.

Applications

Drilling platforms: offshore and onshore, loading and unloading OTR trucks
“Hands Free” Guiding, spotting and landing suspended loads
Maneuvering drill pipe and all types of tubular on pipe racks or on the platform
Snagging taglines and sling legs

Ratings

Load testing: Static Pull = 400 lbs. / Compression = 600 lbs.
Our tools are not lifting / load bearing tools, SWL cert not required.
Major components tested to ASTM standards,
Country of origin: USA

Instructions for use

Always wear proper personal protective equipment as the job requires
Inspect the tool before each use and use both hands when operating tool
Stand with both feet firmly planted on the ground and use only in straight push /pull applications
Inspect and clean tool after each use and store in clean, dry environment

Warnings

Do not use the tool if damaged, Do not use the tool as a pry bar
Do not use tool while tired or under the influence of drugs, alcohol, or medication
Do not over reach

Inspection and maintenance

Inspect the tool before each use
Inspect all components of the tools for damage and wear clean tool after each use and store in clean, dry environment If tool has been damaged: report - remove - replace

STIFFY HAND TOOL



YOUR “HANDS OFF” POLICY SOLUTION



THE STIFFY
HAND TOOL
HOOKS ARE
USED TO
RETRIEVE
VARIOUS SIZE
SLING



YOUR MEN CAN
ROLL PIPE
STAYING CLEAR
OF
RISKY AREAS
AND
MITIGATING
HAND INJURIES



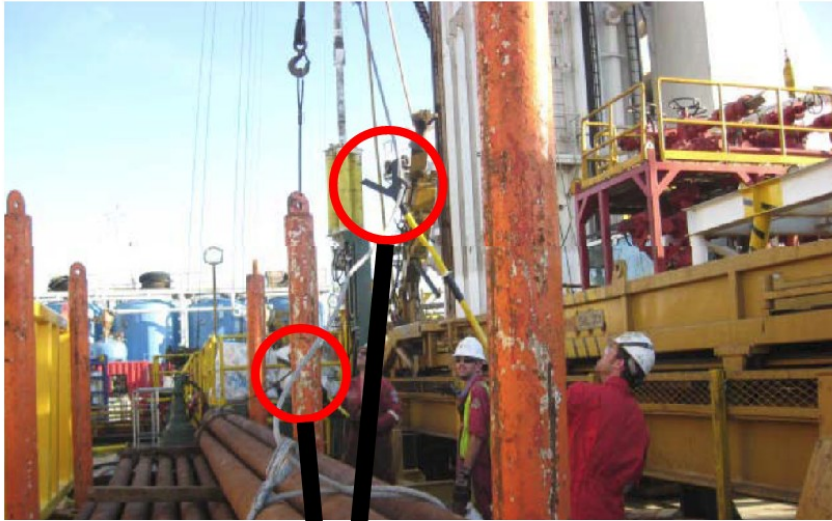
Call us today!

814.833.7227

**We received this comment from an operator
about the STIFFY HAND TOOL**

*“I observed the crane crew offloading a boat load of 9.625 casing.
During this operation only having one SHT, the man using it
spotted every load on his end without help. The push – pull
features of The STIFFY HAND TOOL made a big difference.”*

STIFFY HAND TOOL PERSONNEL FIRST!



**PERSONNEL
NOT
UNDER
LOADS**

**THE
STIFFY
HAND
TOOL
AT
WORK**



**RETRIEVING
SLING
CLEAR
OF
THE LOAD**

Fibertex & Supply, Inc.

Stiffy Hand Tool

Patent Pending

HSE Bulletin

"Stiffy Hand Safety Tool" – Hands-off Tool to spot Objects and Loads

In 2011, injuries to arms, hands, and fingers accounted for 26% of the total incidents submitted in the Gulf of Mexico. Variable deck loads can thoroughly cover the main deck area with tubular, cutting boxes, tote tanks, etc. This equipment is continually being transferred which creates hazardous risks (pinch points) when spotting. The limited deck space means that Roustabouts have used their hands, fingers, and bodies in at-risk-positions to spot or remove loads.

New to our industry is a hands-off tool called the "*Stiffy*", a fiberglass push pole. Hercules 173 has field tested the "*Stiffy*" for six months with significant success in eliminating hand and fingers injuries when transferring loads. This tool uses opposing grab hooks to grasp taglines and slings.

Before placing hands on loads that are moving or have the potential to move, always stop and consider if an alternative method is available. Using the Hercules Power Tools, particularly the Job Safety Analysis process, pinching and caught-between hazards can be mitigated by use of proper planning, sound lifting procedures, taglines, signaling, and the "*Stiffy Hand Tool*" as an alternative method of final spotting assistance.

We recommend that each Hercules rig carry and use these hands-off tools for main deck usage as well as on work vessels. Ordering information is shown below.

Tool, Stiffy Hand, Reach Extender, Fiberglass Handle, 42 Inch
SHT2-42"

Tool, Stiffy Hand, Reach Extender, Fiberglass Handle, 50 Inch
SHT2-50"

Tool, Stiffy Hand, Reach Extender, Fiberglass Handle, 72 Inch
SHT2-72"



Check Out some new tools our R&D team



The Pipe Wipe is used primarily on land rigs to clean the tubular as it is pulled up. It comes in 3, 4, 5 inch diameters

STIFFY "Handy Hook"™





The Handy Hook is the ultimate in Personal Protection Equipment.

The Handy Hook is a great way to enable personnel to save fingers, hands & arms by avoiding pinch points and crush points.

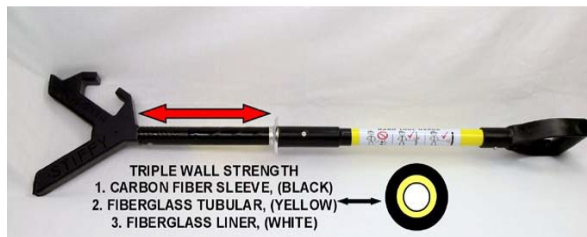


*"we protect fingers, hands & arms,
by avoiding pinch points & crush points"™*

STIFFY HAND SAVER TOOLS

PART NUMBERS	DESCRIPTION
HST-S	 <p>*SHOWN WITH TYPE 1 HEAD AND LAP LINK OPTIONS</p>
SHT_HST-S	6' Hand Tool with tapped ends for threaded accessories*
SHT_HST-LL	Lap Link attachment, threaded*
SHT_HST-Y	TYPE-1 Tool Head with single Hook (Y), threaded*
	(NO D HANDLE)
SHT2	
SHT_SHT2-42	42" TYPE 2 WITH PUSH-PULL TOOLING HEAD
SHT_SHT2-50	50" TYPE 2 WITH PUSH-PULL TOOLING HEAD
SHT_SHT2-72	72" TYPE 2 PUSH-PULL TOOLING HEAD, (NO D HANDLE)

SHT2-HD HEAVY DUTY



SHT2-42HD	TYPE 2HD - 42" HD HAND TOOL
SHT2-50HD	TYPE 2HD - 50" HD HAND TOOL
SHT2-72HD	TYPE 2HD - 72" HD HAND TOOL, (NO D HANDLE)

(Extended carbon sleeve & solid fiberglass liner)

SHT3



SHT3-42	TYPE 3 - 42" HAND TOOL, (NO D HANDLE)
SHT3-50	TYPE 3 - 50" HAND TOOL, (NO D HANDLE)
SHT3-72	TYPE 3 - 72" HAND TOOL, (NO D HANDLE)

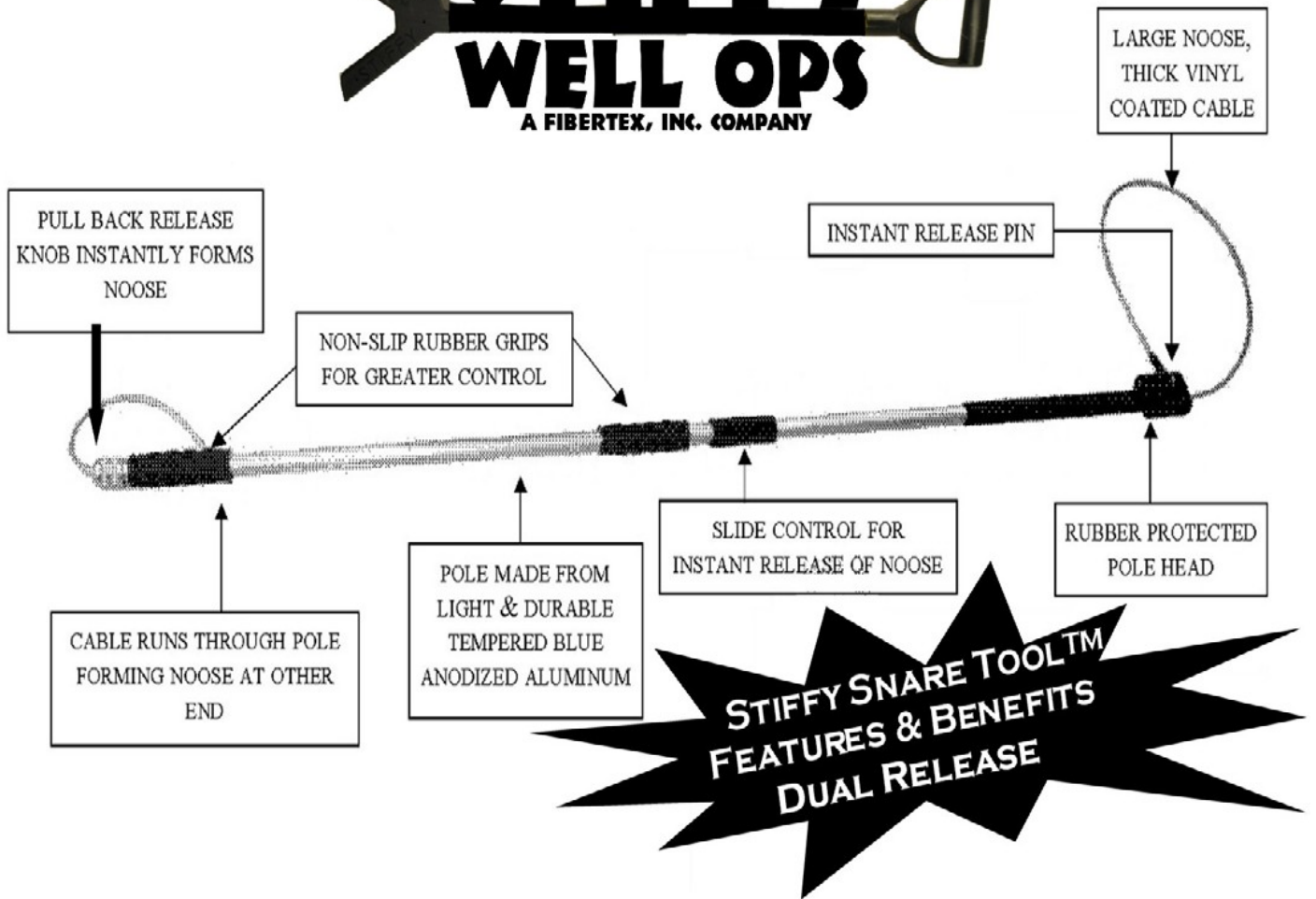
(Type 2 tool head (fixed) with other end tapped , w/ center alum handle)

THE STIFFY SNARE TOOL™

Aluminum and Stainless Steel Snare Poles

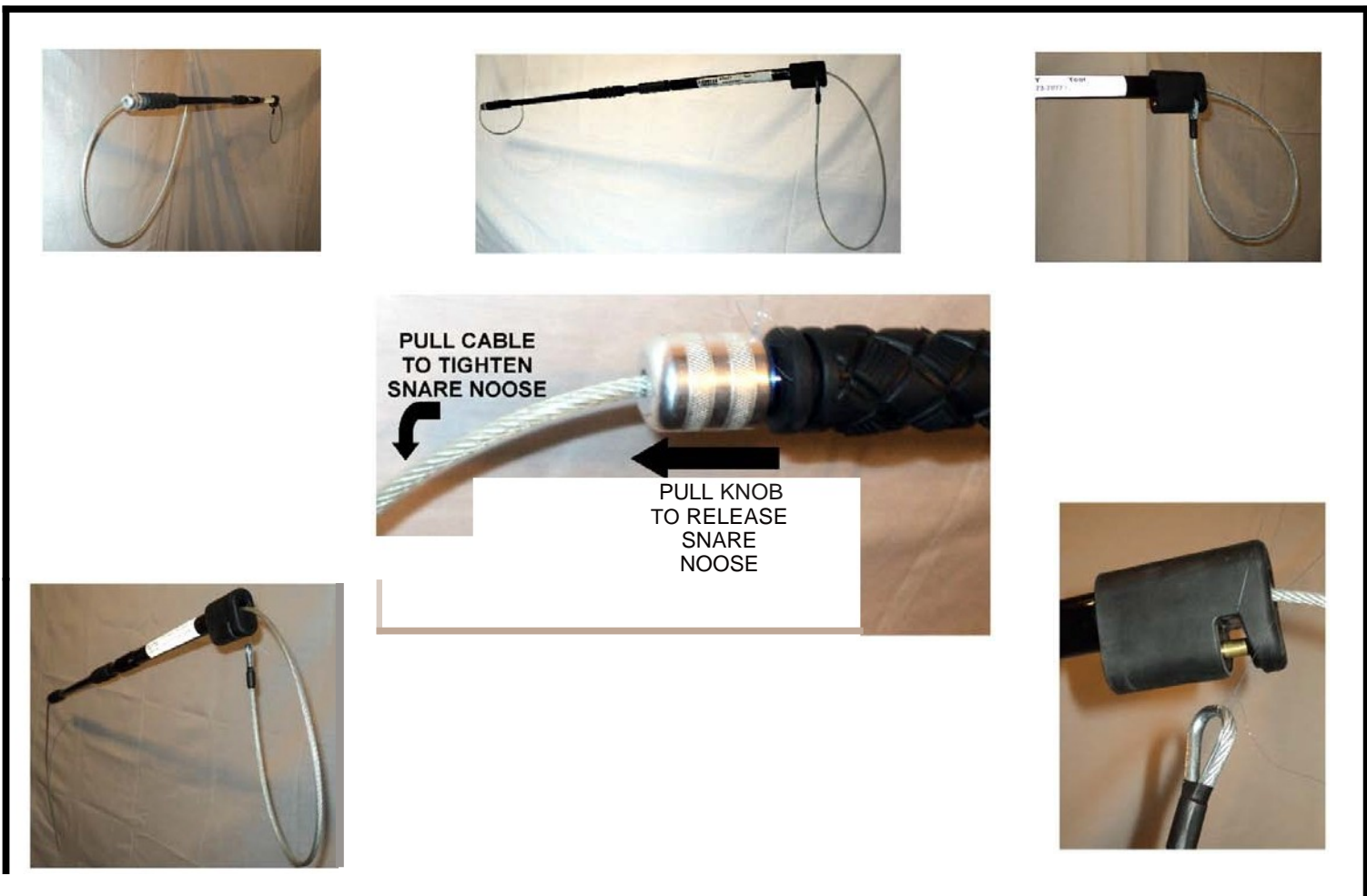
Cousin to the wildly popular **STIFFY HAND TOOL**, the **STIFFY SNARE TOOL** continues to set the bar in assisting operators in providing safe working environments & risk mitigation. After 2 years of extensive R&D, STIFFY has brought to the market the first new **SNARE TOOL** designed for controlling tubular in **WELL-OPS**. The **STIFFY SNARE TOOL** features improved non-slip grips, automatic locking mechanism and super strong aluminum or stainless steel shaft. The **Dual Release** uses a spring loaded noose release to extend the cable through the tool to release the tubular or the slide control which instantly drops the noose from the tool.



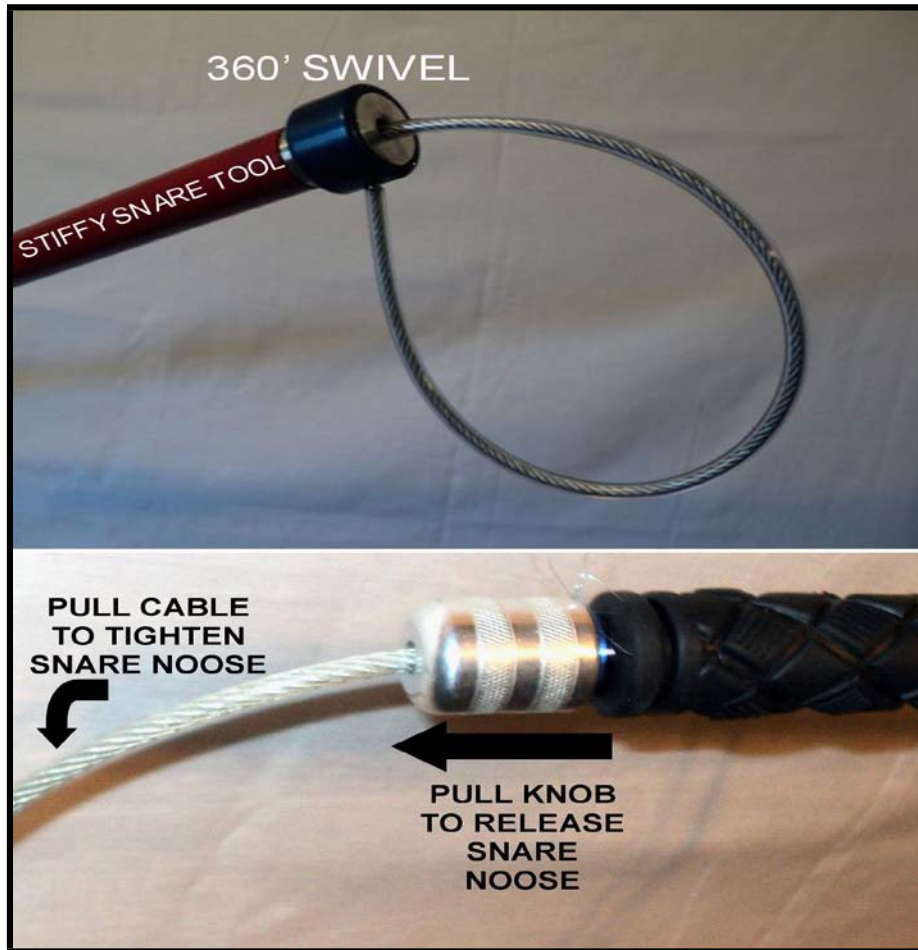


It's Simple...

"Stiffy Safe Hand Tools - we protect fingers, hands & arms, by avoiding pinch points & crush points"



STIFFY SNARE TOOL ; 36" Dual Release, ALUM	SSTDR-36
STIFFY SNARE TOOL; 48" Dual Release, ALUM	SSTDR-48
STIFFY SNARE TOOL ; 60" Dual Release, ALUM	SSTDR-60



STIFFY SNARE TOOL ; SINGLE RELEASE	24" Aluminum	SST-24
STIFFY SNARE TOOL ; SINGLE RELEASE	36" Aluminum	SST-36
STIFFY SNARE TOOL ; SINGLE RELEASE	48" Aluminum	SST-48
STIFFY SNARE TOOL ; SINGLE RELEASE	60" Aluminum	SST-60
STIFFY SNARE TOOL ; SINGLE RELEASE	48" Stainless	SSTSS-48
STIFFY SNARE TOOL ; SINGLE RELEASE	60" Stainless	SSTSS-60